

HARDING AVENUE



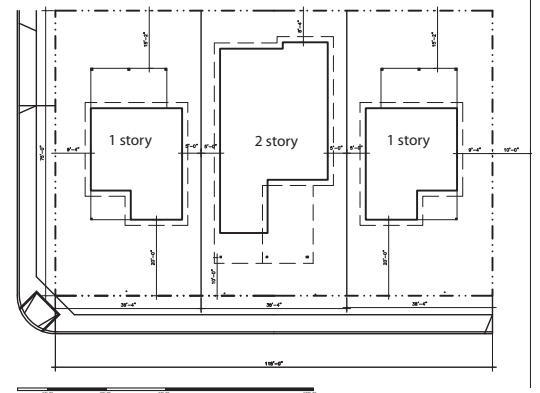
GREEN BUILDING STRATEGIES

NATIONAL CITY, CA

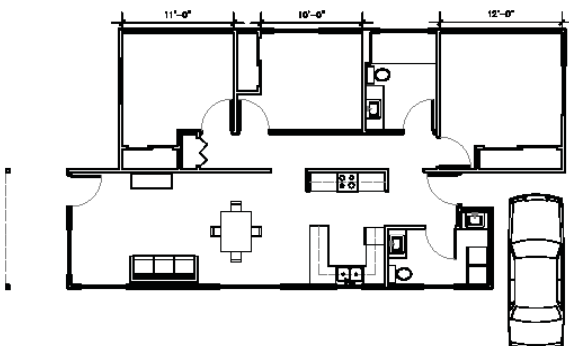
- Volunteer Labor
- Community Resources
- Edge Development
- Previously Developed Land
- Access to Public Transit
- Solar Site Lighting
- Drip Irrigation System
- Solar Irrigation System
- Rainwater Harvesting System
- No Soil Exporting
- Minimize Disturbed Area of Site
- Permeable Lot
- Management of Run-off from Roof
- No Invasive Plants
- No Conventional Turf
- Drought Tolerant Plants
- Operable Windows in Living Space
- Sustainable Flooring
- Solar Panels
- 85%> Efficient Furnace
- Whole House Fans
- Low VOC Paints
- Double Pane Windows w/ U-Factor of .35/>
- Energy STAR Appliances
- Low VOC/ Cotton Insulation
- High Efficiency Fixtures
- Exceeds Title 24 Requirements
- Window Overhangs to Reduce Heat Gain
- OSB Sheathing
- Insulation/ Panelized Wall System
- Building Orientation for Solar Design
- Metal Roof or Other Sustainable Material for Roof w/ min. 3 year Warrantee

3 SINGLE-FAMILY HOMES
SITE AREA --- 0.2 ACRES

3 & 4 BEDROOM
1 & 2 STORY
2 BATH
2 CAR GARAGE



UNIT TYPE 1



UNIT TYPE 2

